

## Abaco floor plan in WaterGrass

Starts at \$365,900

1 Story, 3221 Sq. Ft.

4 Bedrooms, 3 Full Baths, 1 Half Bath

3 Garages

The Abaco with option to add an upstairs bonus room and an optional bedroom and full bath, this home offers flexible living space that can easily accommodate homebuyers. The main level features four bedrooms and a media room or optional fifth bedroom, plus a central family room with adjacent kitchen and breakfast area. Add in formal living and dining rooms, and the total living space here is a roomy 3,221 square feet.

## Abaco Exterior views



Elevation abaco\_cft\_asch1-web\_2017-07-07



Elevation abaco\_cft\_cs3ch3\_web

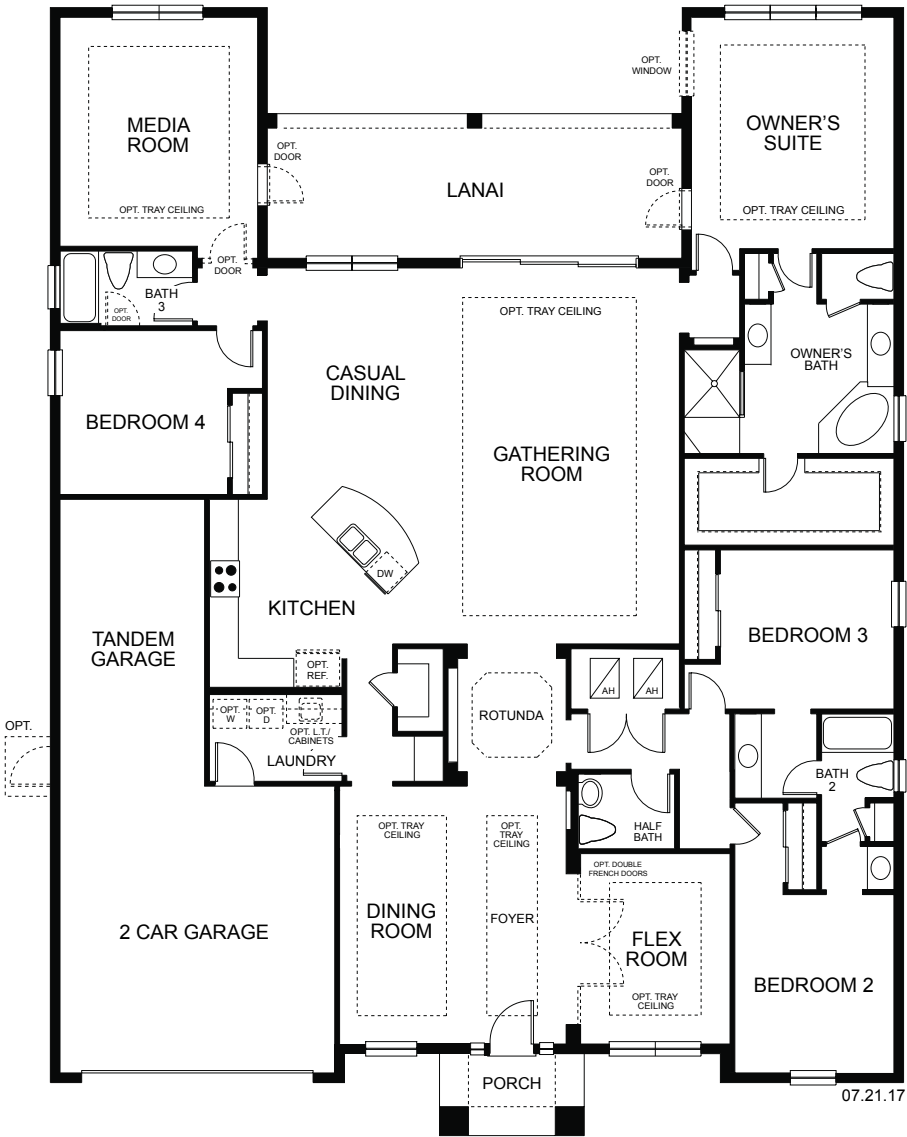


Elevation abaco\_cft\_b\_sch2\_web



Elevation abaco\_ie\_cft\_sch9-web\_2017-07-13

Abaco 3221 SQ. FT. FIRST FLOOR



Personalized for you

[taylormorrison.com](http://taylormorrison.com)



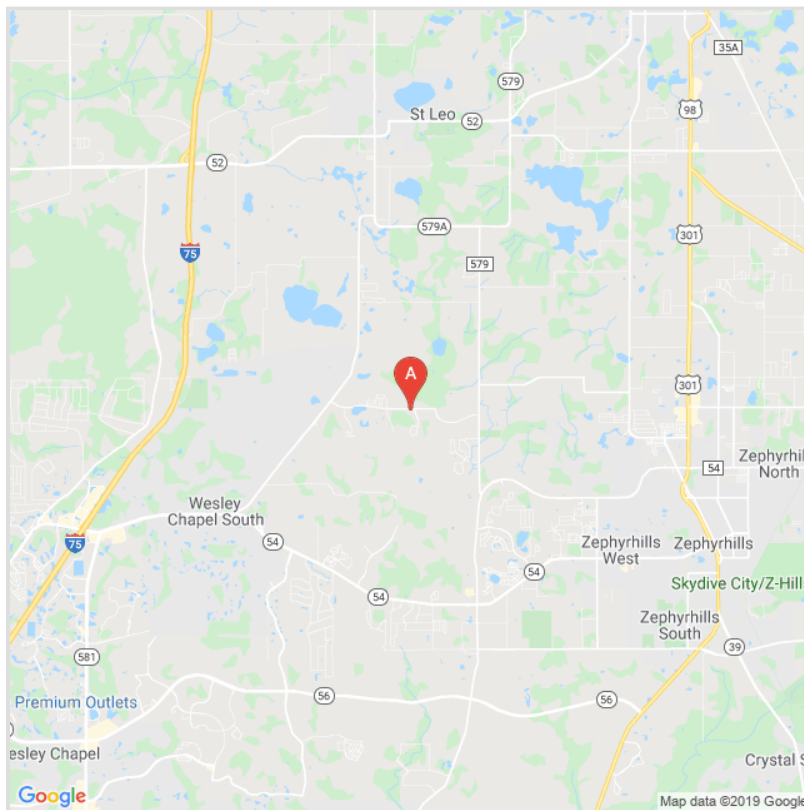
Offer void where prohibited by law. All information (including, but not limited to prices, availability, incentives, floor plans, site plans, features, standards and options, assessments and fees, planned amenities, programs, conceptual artists' renderings and community development plans) is not guaranteed and remains subject to change or delay without notice. Maps and plans are not to scale and all dimensions are approximate. Please see a Taylor Morrison sales associate for details and visit [www.taylormorrison.com](http://www.taylormorrison.com) for additional disclaimers. © November 2019. All rights reserved.



## WaterGrass Neighborhood Information

**Taylor Morrison homes are now selling in Willow Point at WaterGrass, with a new collection of homes now selling in Astoria at WaterGrass. Visit today for more information & discover your Wesley Chapel, Florida dream home!**

At WaterGrass, the focus is on living well. Taylor Morrison offers a stunning selection of new single-family homes for you to choose from. As a resident of WaterGrass, you will have access to an exciting array of amenities including a luxurious pool with splash zone and lap lanes, a six-lane junior Olympic pool, large covered lanai, private clubhouse with state-of-the-art fitness center and separate children's play room, gathering room with TV, microwave and beverage fridge, catering kitchen, shaded playground with green space, tennis courts, a ½ basketball court and more. Plus - an all-new amenity center is now open! Promenade Park brings an additional array of exciting amenities for WaterGrass residents to enjoy. Amenities include a new resort-style pool and separate splash park, dog park with large & small dog areas, playground, picnic area & more! Visit today to tour our model homes in **Willow Point** and **Astoria**.



**Community location:**  
33550 Willow Point Court  
Wesley Chapel, FL  
33545

**Sales office:**  
33550 Willow Point Court  
Wesley Chapel, FL  
33545

**Call us:**  
813-331-0796