

Tradewinds floor plan in WaterGrass

Starts at \$433,900
2 Stories, 4830 Sq. Ft.
7 Bedrooms, 4 Full Baths, 0 Half Bath
3 Garages

The Tradewinds with its impressive size (4,830 square feet), its open island kitchen that flows into the sunny breakfast nook and its spacious family room. All of the upstairs bedrooms feature large walk-in closets and share easy access to a media room and game center. An optional second master suite upstairs even has its own spa bathroom and private sitting room.

Tradewinds Exterior views



Elevation tradewinds_cft_a_sch2-web_2017-07-07

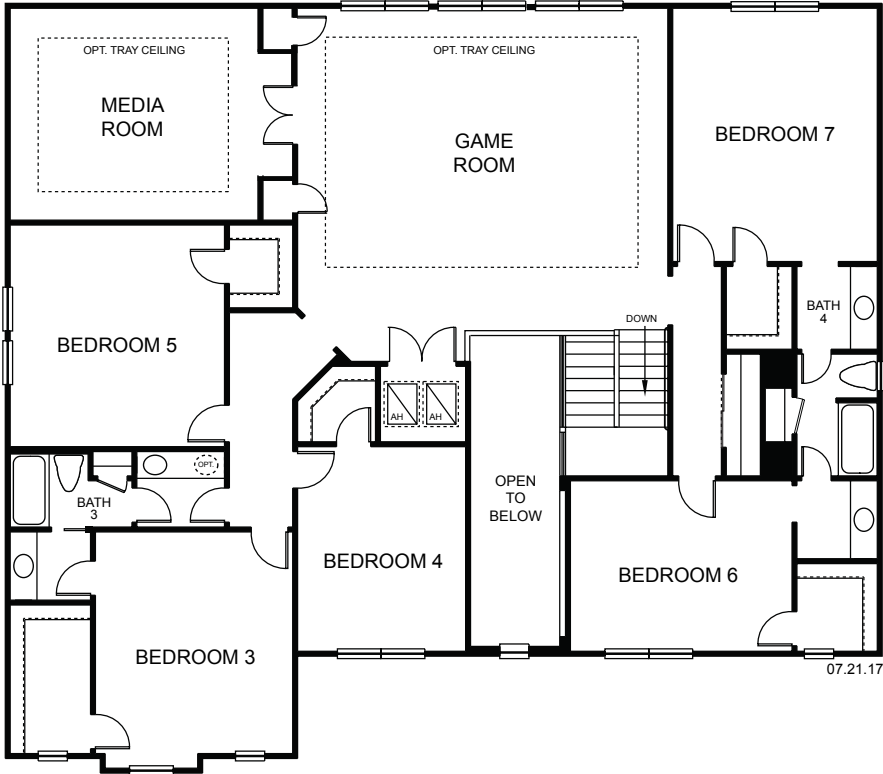


Elevation tradewinds-cft_c_sch4-web



Elevation tradewinds_cft_b_sch3-web_2017-07-07

Tradewinds 4830 SQ. FT. SECOND FLOOR



Personalized for you

taylormorrison.com



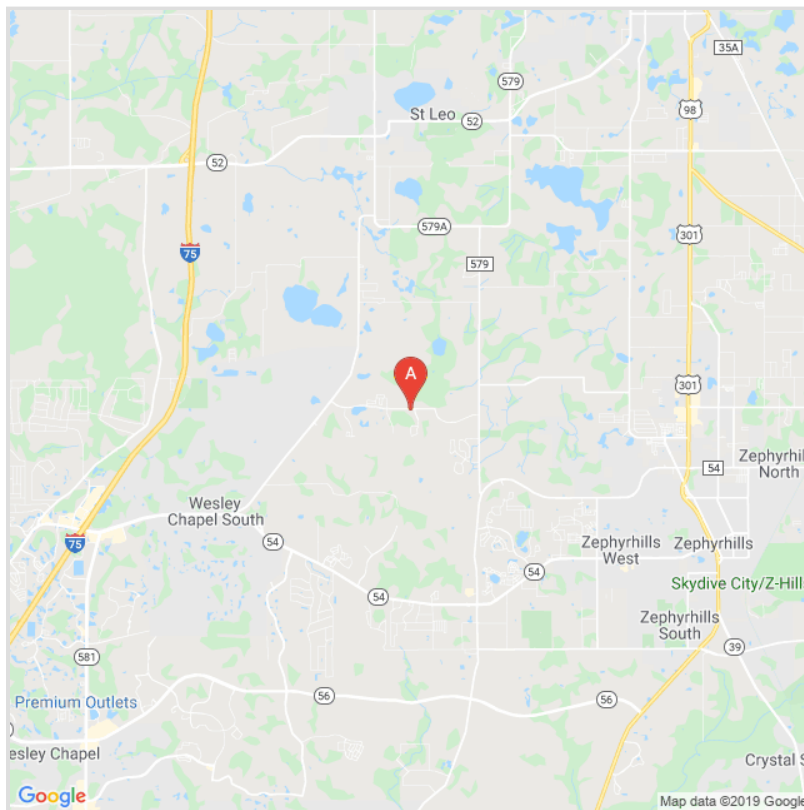
Offer void where prohibited by law. All information (including, but not limited to prices, availability, incentives, floor plans, site plans, features, standards and options, assessments and fees, planned amenities, programs, conceptual artists' renderings and community development plans) is not guaranteed and remains subject to change or delay without notice. Maps and plans are not to scale and all dimensions are approximate. Please see a Taylor Morrison sales associate for details and visit www.taylormorrison.com for additional disclaimers. © November 2019. All rights reserved.



WaterGrass Neighborhood Information

Taylor Morrison homes are now selling in Willow Point at WaterGrass, with a new collection of homes now selling in Astoria at WaterGrass. Visit today for more information & discover your Wesley Chapel, Florida dream home!

At WaterGrass, the focus is on living well. Taylor Morrison offers a stunning selection of new single-family homes for you to choose from. As a resident of WaterGrass, you will have access to an exciting array of amenities including a luxurious pool with splash zone and lap lanes, a six-lane junior Olympic pool, large covered lanai, private clubhouse with state-of-the-art fitness center and separate children's play room, gathering room with TV, microwave and beverage fridge, catering kitchen, shaded playground with green space, tennis courts, a ½ basketball court and more. Plus - an all-new amenity center is now open! Promenade Park brings an additional array of exciting amenities for WaterGrass residents to enjoy. Amenities include a new resort-style pool and separate splash park, dog park with large & small dog areas, playground, picnic area & more! Visit today to tour our model homes in **Willow Point** and **Astoria**.



Community location:

33550 Willow Point Court
Wesley Chapel, FL
33545

Sales office:

33550 Willow Point Court
Wesley Chapel, FL
33545

Call us:

813-331-0796